

# Spatial Scientific *technologies*

A dynamic, innovative company delivering high quality, tailor-made imaging solutions throughout Australia and overseas.

## Thermal Imaging Specialists

### Spatial Scientific Technologies

An established Australian company dedicated to delivering high quality, tailor-made imaging solutions and geospatial technology.

We provide airborne thermal imagery georeferenced to ground coordinates. It can be directly overlaid onto existing geospatial data or directly imported into any GIS.

### Mining

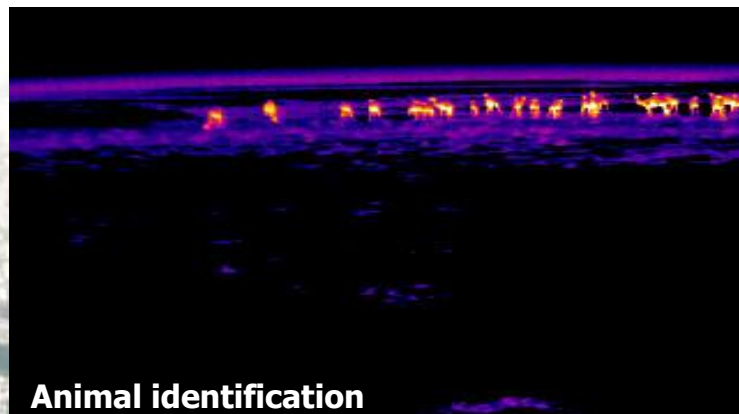
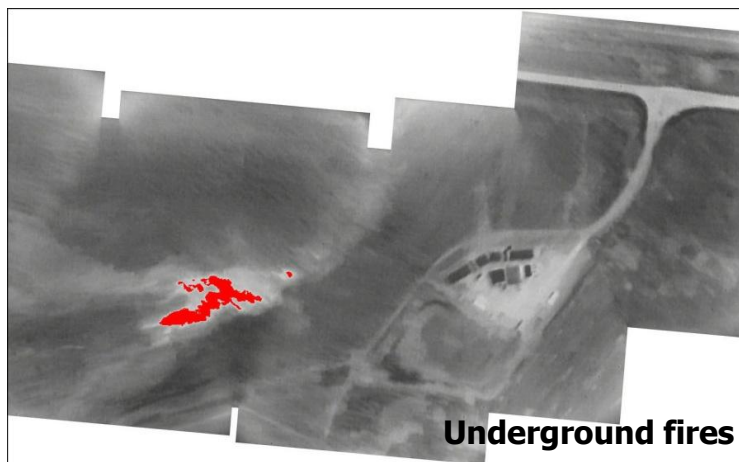
Airborne thermal imaging is used to detect hotspots associated with underground spontaneous combustion. The technology is highly accurate, reliable and cost-effective, delivering images fast.

### Animal Detection

Accurate animal surveys can be undertaken using either airborne or ground-based thermal imaging.

### Fire Spotting

Fires and hotspots can be detected, even when the ground is obscured by smoke.



Specifications	
Thermal range	8 $\mu\text{m}$ to 13 $\mu\text{m}$
Sensor size	320 x 240 pixels
Ground pixel size	0.25m to 2.0m